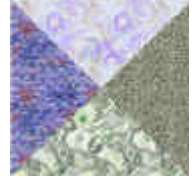


Quarter Square Triangles

What are Quarter Square Triangles?

A Quarter Square Triangle is a square that is cut through the diagonal twice to give four triangles.

Four half square triangles make a square.



How are quarter square triangle blocks made?

Cut squares of fabric the required size. For this lesson we will use 3¼" squares.

There are two steps to making Quarter Square Triangle blocks.

Step One:

Make a Half Square Triangle as described in our Half Square Triangle lesson at: <http://www.arbeedesigns.co.nz/classes.php?sect=4>

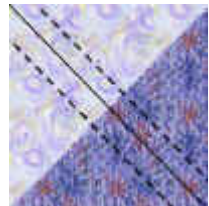
Press open but do not trim.

Step Two:

Place two Half Square Triangle blocks together so seams are matching directly on top of each other.

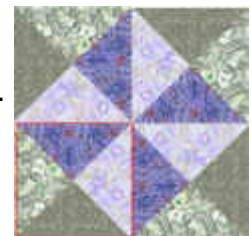
Draw a diagonal line through the block opposite to the seam, and stitch ¼" from drawn line on both sides.

Cut along drawn line and press as describe for Half Square Triangle block. Trim to 2½" matching lines on ruler with seam.



How do you determine the cutting size?

Add 1½" to the finished size of the block. This example shows a 4" block. A Quarter square triangle block (outlined in red) for this is 2" therefore cut each square 3½".

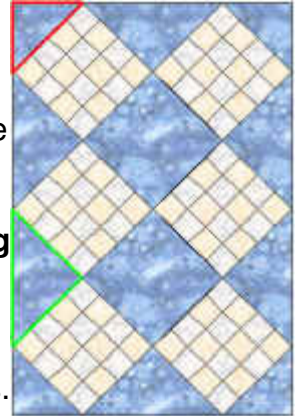


Where else do we use quarter square triangle?

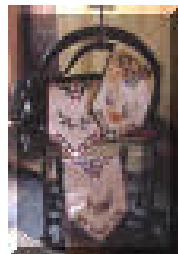
Quarter square triangles are also used for the setting triangles of a quilt made where blocks are on-point (outlined in the green triangle). Here we just use single triangles so they are cut before stitching.

Do we also use single quarter square triangles for the corner setting triangles of a quilt made with blocks on-point?

No. We use half square triangles for this (half square triangle is outlined in red). Check below to find more information about half square triangles.



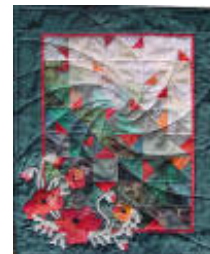
Check out some of our patterns that use quarter square triangles



Festive Runners



Carry All Board Bag



Poppy Field

We have many more online classes for offer be sure to check them out

<http://www.arbeedesigns.co.nz/classes.php?sect=4>

© Ruth Blanchet 2003 ... Note: these instructions are copyrighted. It is illegal to copy them, distribute or sell them without permission. Thank you for respecting the rights of the designer.

Designed for Arbee Designs

<http://www.arbeedesigns.com/>